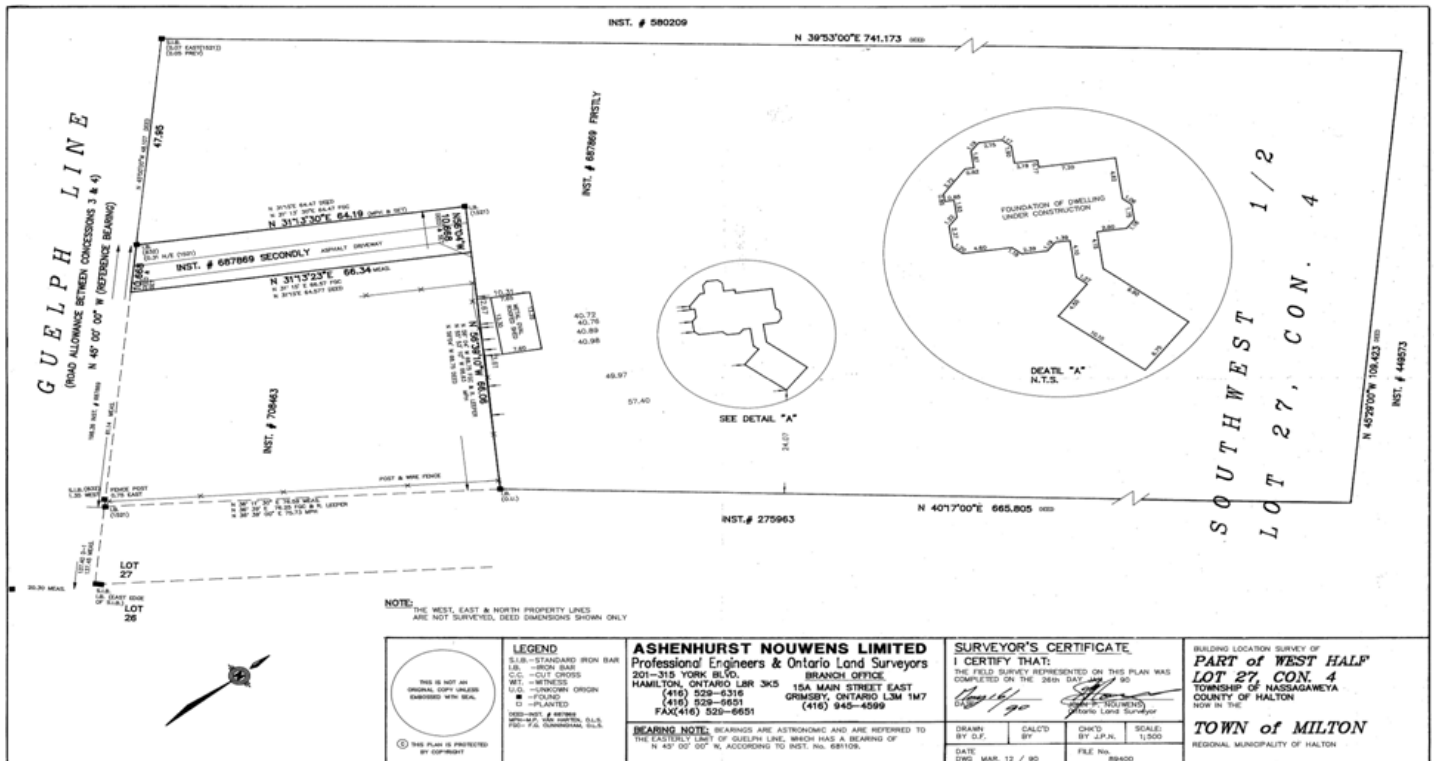
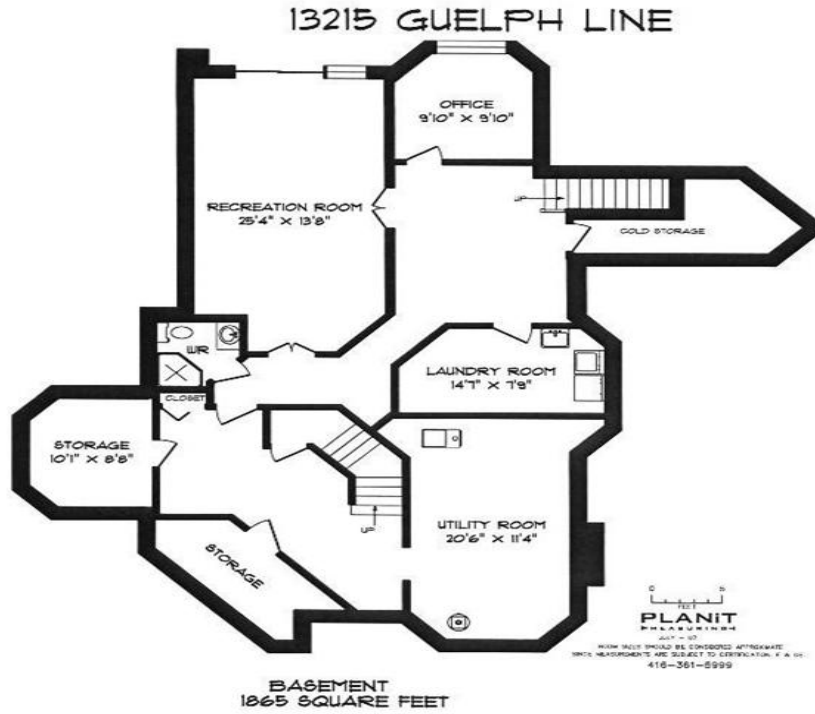


13215 Guelph Line



LEGEND	
	S.I.B. - STANDARD IRON BAR
	I.B. - IRON BAR
	C.C. - CUT CROSS
	W. - WITNESS
	U.O. - UNCOPY ORIGIN
	F. - FLAG
	P. - PLANTED
	ASHENHURST & NOUWENS P.O. BOX 100, HAMILTON, ONT. L8N 4R1

ASHENHURST NOUWENS LIMITED
Professional Engineers & Ontario Land Surveyors
201-315 YORK BLVD.
HAMILTON, ONTARIO L8N 3K5
(416) 529-6316
(416) 529-6651
FAX (416) 529-6651

BRANCH OFFICE
15A MAIN STREET EAST
GRIMSBY, ONTARIO L3M 1M7
(416) 945-4599

BEARING NOTE: BEARINGS ARE ASTROMONIC AND ARE REFERRED TO THE EASTERLY LIMIT OF GUELPH LINE, WHICH HAS A BEARING OF N 45° 00' 00" W, ACCORDING TO INST. NO. 481109.

SURVEYOR'S CERTIFICATE
I CERTIFY THAT:
THE FIELD SURVEY REPRESENTED ON THIS PLAN WAS
COMPLETED ON THE 26th DAY OF APR 2000

[Signature]
JAMES NOUWENS
Ontario Land Surveyor

DATE: MAR. 12 / 90
DRAWN BY: S.F.
CALCD BY: J.P.N.
CHKD BY: J.P.N.
SCALE: 1/500
FILE NO: 89400

BUILDING LOCATION SURVEY OF
**PART of WEST HALF
LOT 27, CON. 4**
TOWNSHIP OF MASSAGUENEA
COUNTY OF HALTON
NOW IN THE
TOWN of MILTON
REGIONAL MUNICIPALITY OF HALTON